

Power Supply "UPS" to support Fire & Voice Alarming System

The advanced Uninterruptible Power Supply for alarm system EN54-4



- Specific device for application in fire-protection systems. Designed for 2 or 3 outputs and protected from overload and short circuit, it provides fault indication and eliminates the deep discharge of batteries
- Temperature compensated charging
- Input: one single phase (115-230-277 Vac)
- Output: 12-24-48 VDC
- Temperature compensation
- Deep discharge protections
- IUoUO charging curve, constant voltage and constant current Battery-Life Test function (Battery Care)
- Four charging modes: Recovery, Boost, Absorption, Float
- Protected against short circuit and reverse polarity
- Output signal (contact-free) for discharged or damaged battery, Modbus, main and back-up
- Combinable with DC UPS series
- Wall mounted
- Protection degree: IP30
- Complies with EN54-4 (*Pending Approval*)



Recreational



Hospital



Metropolitan

Inside the Device



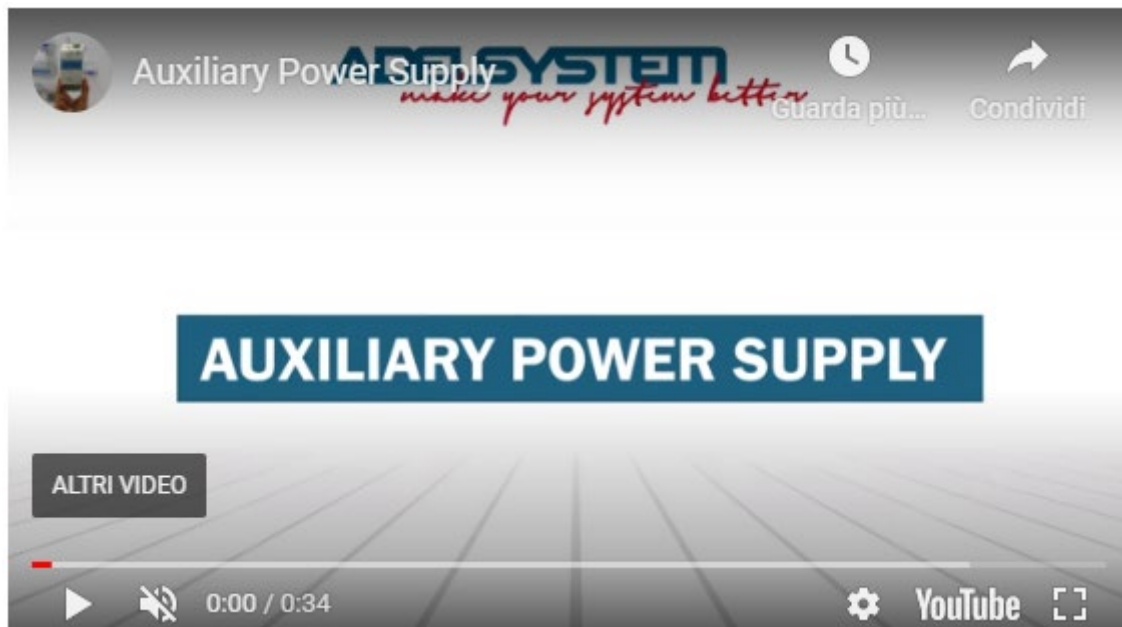
Uninterruptible power supply unit for fire protection and voice alarm systems. It is possible to configure the device by choosing two different types of display, DPY351 and DPY353, while meeting all requirements of the EN54-4 standard.

The device can be integrated with the whole range of CBI ADEL system batteries and with different battery sizes (from 1.2 to 18 Ah). Its protection degree is IP30. Its maximum total output can reach 20 A and it can be distributed between load and battery, depending on the type of CBI chosen. The complete

range of power-supply output is 12-24-48 VDC. CBI devices can load, recharge and test batteries. For *Recharge-&-Testing* battery features, please refer to the *Technical Data* of the CBI Line.

In case of failure, CBI devices automatically switch the battery to the load without any output interruption. The battery is tested, charged and its charging temperature compensated through the external temperature sensor. With models DPY351 and DPY353, you can monitor the state of the device. An alarm will directly report a signal through dry contact or by Ethernet. The alarm mainly indicates a problem such as a battery fault (*Internal Impedance*), a problem related to the back-up or a rectifier fault.

SFP54.4 can be connected through other devices by ADELBus in loop configuration. For instance, CBI2801224A is performed for this configuration. In this way, you can manage additional devices with only one DPY351 display. With DPY531, it is also possible to detect electromagnets for fire doors; record switch detectors, ground leakage and environmental temperature; as well as to control light or output sound alarms. Installing a LDC (3.5") on the front panel, enables you to monitor the system condition, i.e., event log, alarm, battery, back-up, output current (and voltage) during the loading, as well as the battery side connected on the loop. There is also a keyboard on the display of DPY351 for the configuration and maintenance of the device.



Devices Selection

Power Supply Units

You can connect on the panels all the DC-UPS (CBI line of ADEL system DC-UPS). They are all-in-one products and they incorporate: power supply, back-up, battery charger, tester module and Power Management System. Power Management System is an automatic power sharing system that works across the power supply, the battery and its load. It is suitable for all battery types. Our *Battery Care* is an automatic form of diagnostics that checks the battery status, including our *Life-Test* function. This system detects the internal battery impedance (Input: 115-230-277 Vac - Output: 12-24-48 VDC).



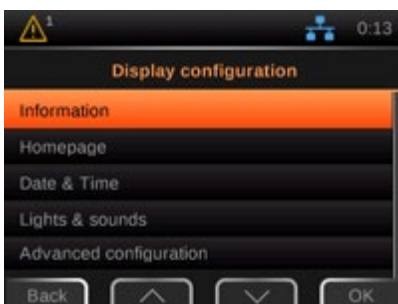
DPY351

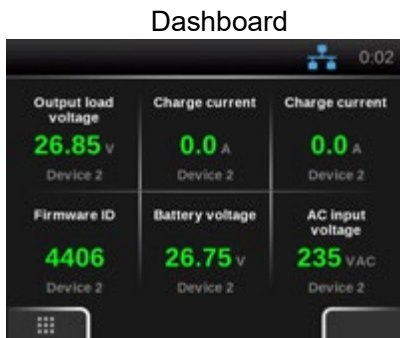


Inside the Device

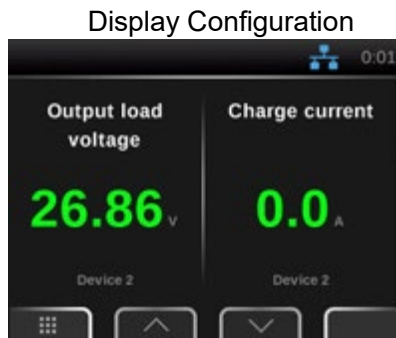
The 3.5" display, designed for heavy-duty usage, thanks to a robust IP67, allows the user to manage multiple units, as well as monitor, configure, store and remotely connect. A single device, therefore, enables the inclusion of all these functions, ensuring great performance at the highest level.

Display View





Customize "Six Values"



Customize "Two Values"



Customize "Single Value"



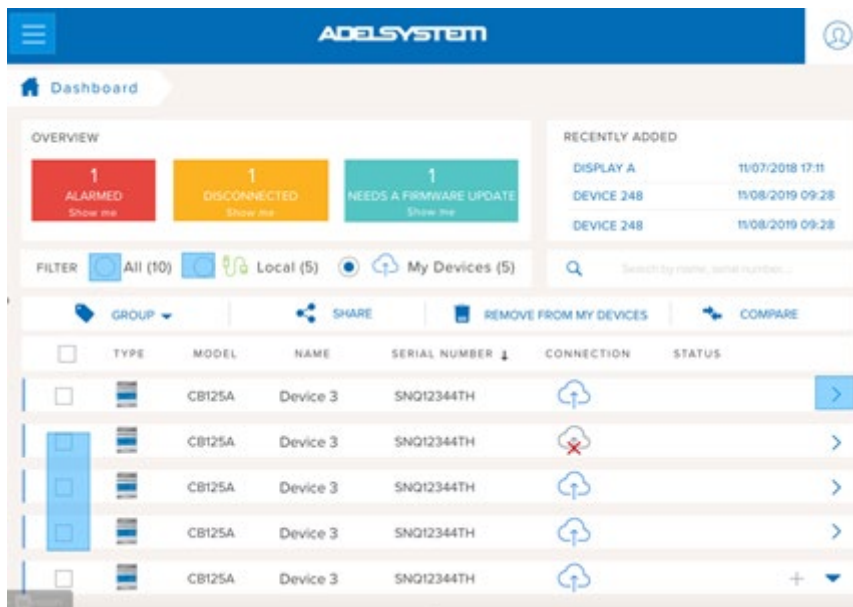
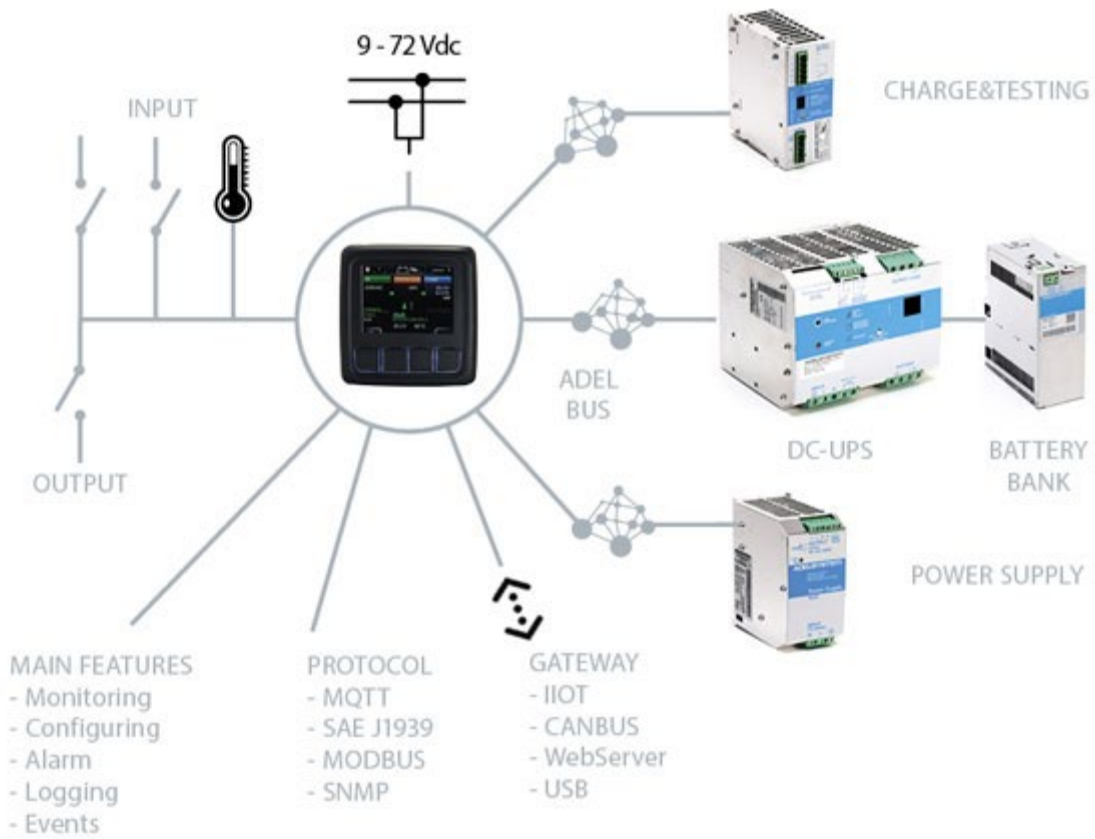
Notification Alarm

Gateway and Protocol

DPY351 is a powerful device in addition to being a gateway:

- **HTTP Web Server** to configure and drive the device by Ethernet
- **Static or Dynamic IP.**
- **TCP/IP Modbus - TCP/IP Configuration** (configuration of parameter groups associated with default values to allow a unique identification of the unit in the whole network).
- **SNMP v2c** (an ADEL system MIB-table is provided. It consists of a list of parameters of the connected power device that can be remotely read, as well as read-written, through the SNMP. Each parameter, OID, is mapped one-to-one to a RTU Modbus holding register).
- **MQTT** communication to allow the DPY351 to connect to the ADELView System Cloud for the remote monitoring of the power devices connected to the DPY using Modbus or CANbus.

Schematic Environment DPY351



Software

Suite for remote monitoring and management of the device connected in ADELBus network or in the Cloud. It is possible to monitor and configure the device for months/years, i.e., history log, data log, etc.

Accessories

RJTemp



- RJTemp for CBI line (compensated-temperature battery charge).
- RJTemp temperature measuring. DPY351 can measure environmental temperature and take actions in relation to its minimum and maximum values.

