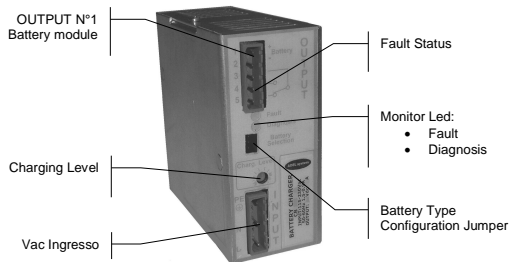


CB363A

Intelligent Battery Charger

Thank you for having chosen one of our products for your work. We are certain that it will give the utmost satisfaction and be a notable help on the job.

General Description:



Application

CB battery charger is a range of microprocessor-power supplies which correctly charge sealed lead-acid batteries at all time maximizing performance and life span. Charge the battery in multi-stage principle, Fast and Trickle and automatically the device, check the battery quality in a lifetime to prevent any risk of damage to the battery and allow leaving the charger permanently connected. Before begin the operations of installation consult the manual.

Mains Characteristic

- Nominal Input Voltage: 115 - 230 Vac
- OUTPUT 1: for connection to Battery
- Fast and trickle battery charge In according to DIN 41773
- Signaling: fault status of the battery
- Overload and short circuit protections
- Power limited Battery output
- Safety isolation in according with EN 60950
- Degree of protection IP20
- Rail DIN mounting

Instruction Manual

ADEL system srl Via L. Barchi 9/B, 42124 Reggio Emilia (Italy) – Tel. ++39-0522-345518
Fax. ++39-0522-345551 – Internet: www.adelsystem.com

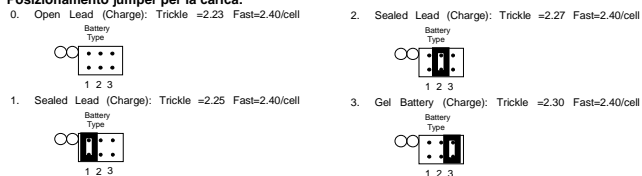
CB363A_R1 Eng.doc

Battery Charger

Battery Type Configurations

Caution: Switch off the system before Setting the jumper.

Posizionamento jumper per la carica:



Cable connection

The following cable cross-sections may be used:

At the Input: 0.2-2.5 mm² rigid / flexible

At the Output: 0.2-2.5 mm² rigid / flexible

Strip the connection ends: 7mm

Input: The input connection is made by the screw connections L, N, PE.

Protection

On the primary side: the device is equipped with an internally fuse T 4 A/250Vac. If the internal fuse is activated, it is most probable that there is a fault in the device. If happen, the device must be checked in the factory

On the secondary side Battery and load: The device is electrically protected against short circuits and overload.

Inversion polarity: the module is protected against inversion of battery polarity.

Over current and output short circuit: the unit limits the output power at max. 108W in normal rating.

Battery Test: Automatic. Check polarity and battery. Every 4 hours in trickle charge, make the test of the battery quality. The fault is signaled with relay commutation and diagnosis led blinking.

Characteristic curve

Output current

Internal temperature is electronically controlled. Therefore, battery current is continuous as long as temperature does not exceed the established limit.

Short circuit and overload

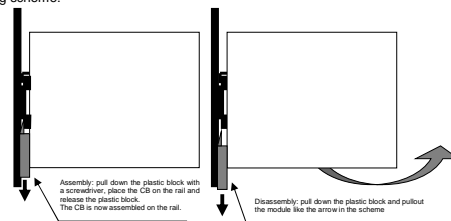
The output current to the battery is selected with the Charge Level trimmer. The maximum power – load of 108W limits the current to the battery, in 187-264 Vac input range. In 93-132 Vac input range it is necessary to consider the derating of 60 W max specified in technical features.

Thermal behaviour

The device supplies the nominal output current at ambient temperature of up 40°C. For ambient temperature of over 40°C, the output current must be reduced by 1% per °C increase in temperature. Max 50°C.

Rail mounting:

- The module must be mounted in vertical position.
- Other modules must have a minimum vertical distance of 10 cm to this power supply in order to guarantee sufficient auto convection.
- Mounting scheme:



Caution: Switch off the system before connecting the module. Never work on the machine when it is live.

Functional Characteristics

Charging Level Current: With trimmer from 20% to 100% of In. Select the max. battery charge current estimated from 10 to 20% of the nominal capacity

Battery Module (Output 1) 1-2 Pin: Battery input.

Low Battery or Battery replacement: In normal condition with battery in good status: led fault off and contact close (3-4), Any fault status of the battery: led fault on and contact open (3-4) *Not available on the LC type.*

Diagnosis LED

- Normal conditions:
 - Very fast blinking = recovery charging (when the battery is too low, Under 30 Vdc)
 - Fast blinking = fast charge
 - Slow blinking = trickle charge (floating charge)
- Error conditions, Led Fault on and Led Diagnosis:
 - 1 blinking = Batteria Reverse polarity battery; Bad input voltage battery.
 - 2 blinking = Battery not connected.
 - 3 blinking = Short circuit battery element
 - 5 blinking = Bad battery.(Internal impedance Bad or Bad battery wire connection)

All specification are subject to change without notice



INSTRUCTION MANUAL

2
CB363A_R1 Eng.doc

Battery Charger

Standards and Certification

Electrical safety

The device must be installed in according with EN60950. The device must have a suitable isolating facility outside the power supply unit, via which can be switched to idle.

General Standard

Immunity in according with EN50082-2, level 3, class B
Radio interference suppression in according with EN 55011 class A (industrial areas)

Features

Input Data

Nominal Input Voltage (2 x Vac)	115 - 230 Vac
Input voltage range	90 - 264 Vac
Inrush Current (Vn - In)	≤ 16 ± 5 msec.
Frequency	47 - 63 Hz
Input Current (Nominal input Voltage)	2.4 - 1.2 A
Internal Fuse	4 A
External Fuse (recommended)	10 A

Output Data

Output Voltage Battery Bulk Charge / Nominal Current	Max 43.2 Vdc / 3 A
Output Voltage Battery Trickle Charge / Nominal Current	Max 41.25 Vdc / 3 A
Adjustment range of charge (In adj)	20 - 100% In
Type of charging characteristic	UI
End of charging voltage (Bulk charge)	Max 43.2 Vdc
Suggested Battery Type up to (for recharging in 10 - 14 hours)	50 Ah
Switching on after applying mains voltage	1.8 sec. Max
Current max	3 A
Efficiency	≥ 81 %
Over Load protection	Yes
Reverse battery protection	Yes
Fault relay contact characteristics	1 A - 30 Vdc
Derating at 115 Vac	60 W Max

Climatic Data

Ambient Temperature (operation)	-10 - +50 °C
Ambient Temperature (storage)	-25 - +85 °C
Humidity, no moisture condensation	95 % a 25 °C

General Data

Isolation Voltage (Input/output)	3000 Vac
Input ground insulation	1605 Vac
Electrical safety	EN 60950
Degree of protection	IP 20
Protection class	I with PE connected
Dimension (w-h-d)	45x110x105
Weight	0.35Kg approx

In according to EMC 89/336/EEC and Low voltage 93/68/EEC	CE
----------------------------------------------------------	-----------

All specification are subject to change without notice

All specification are subject to change without notice



INSTRUCTION MANUAL

3
CB363A_R1 Eng.doc



INSTRUCTION MANUAL

4
CB363A_R1 Eng.doc